

IH-2 AUTOMATIC INTERMITTENT MOTION CARTONER



Shown with extended in-feed and 6' power carton magazine.

STANDARD EQUIPMENT

Includes a rotary carton feed mechanism, detented overload clutch, full line clearance in the flight area, and simple changeover.

OPERATING SPEEDS

Up to 45 cartons per minute

CARTON RANGE

Length	2" to 9"
Width	1/2" to 4"
Depth	5-1/2" to 10"

OVERALL DIMENSIONS

Length	96"
Width	42"
Feed Height	36"

ELECTRICAL

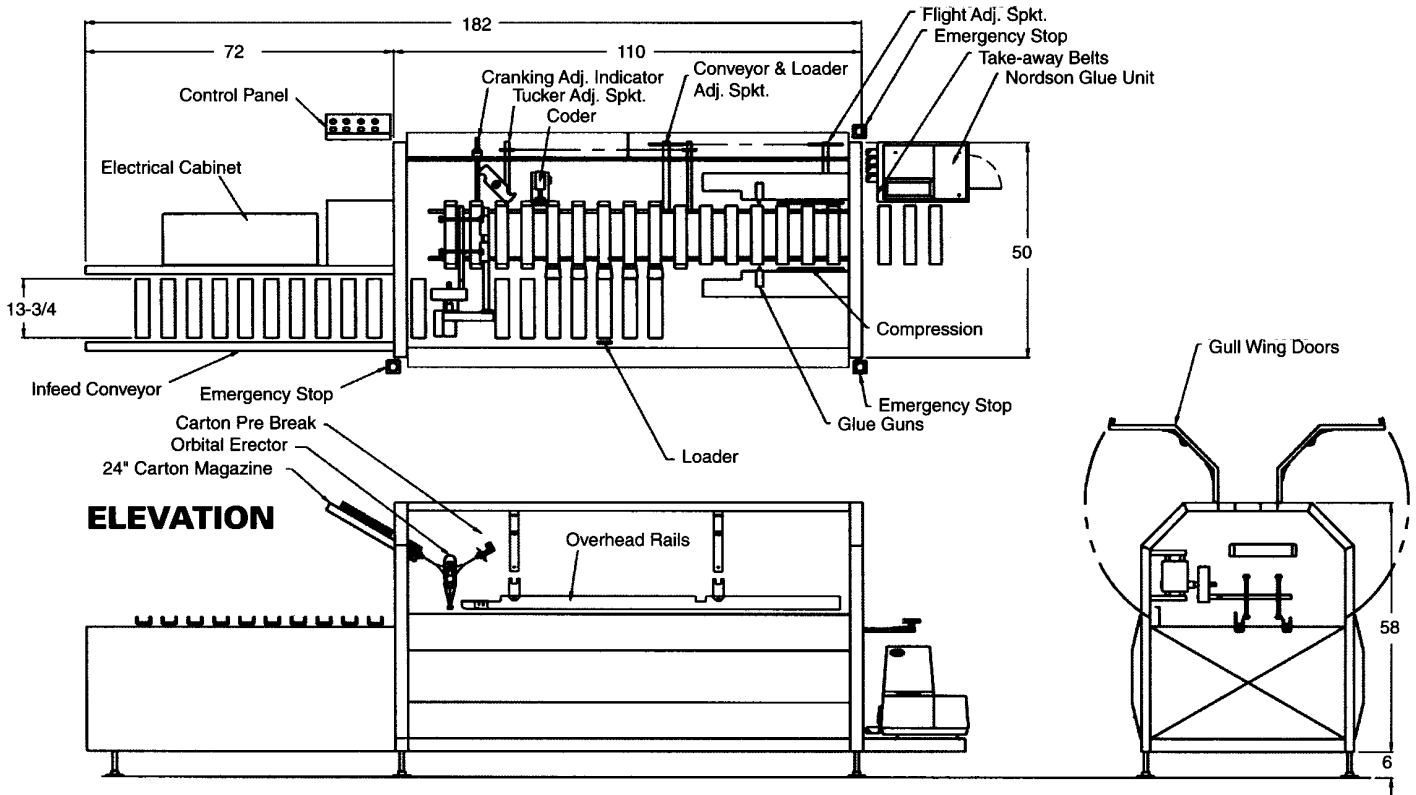
2-hp variable speed drive motor
460/230 volt, 3 phase, 60hz
NEMA 12 electrical

The Elliott Model IH-2 Automatic Intermittent Motion Cartoner offers quiet performance and proven reliability in an affordable and versatile package. Ideally suited for food products, pharmaceuticals, and cosmetics. The IH-2 is ergonomically designed, allowing operator comfort and safety. The cartoner has a heavy-duty robust construction with easy access to mechanisms and simple changeover features. The IH-2 is a compact machine providing durability and value in a competitively priced unit.

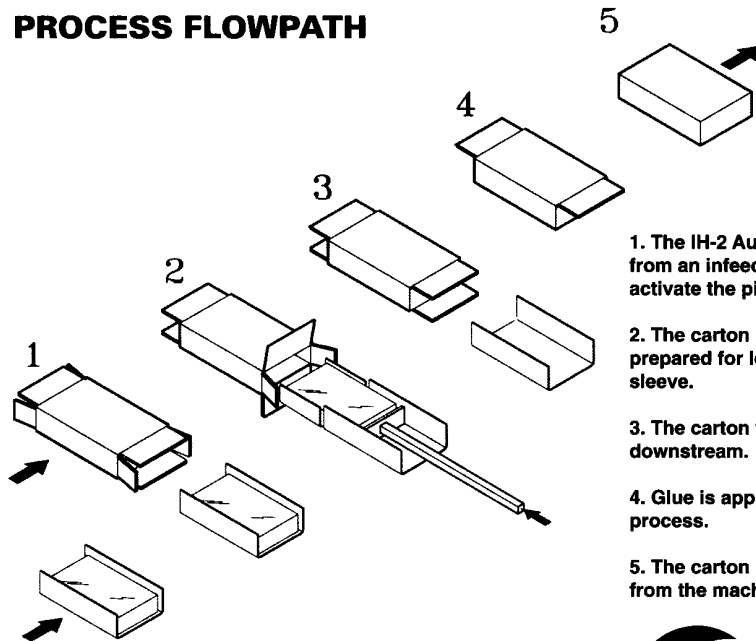


2664 S. Cherry • P.O. Box 11277 • Fresno, CA 93706
559/233-6235 • FAX 559/233-9833
Email: elliottmfg@elliott-mfg.com • www.elliott-mfg.com

IH-2 AUTOMATIC INTERMITTENT MOTION CARTONER FLOOR PLAN



PROCESS FLOWPATH



1. The IH-2 Automatic Intermittent Motion Cartoner receives the product from an infeed conveyor. The product is sensed by a photoeye to activate the picking and placing of the carton sleeves.

2. The carton is then contained for the incoming product and flaps are prepared for loading. A pusher inserts the product onto the carton sleeve.

3. The carton flaps are wrapped around the product as the flights travel downstream.

4. Glue is applied during this process to the major flaps in a two-stage process.

5. The carton is then sealed at the compression station and discharged from the machine.



2664 S. Cherry • P.O. Box 11277 • Fresno, CA 93706
 559/233-6235 • FAX 559/233-9833
 Email: elliottmfg@elliott-mfg.com • www.elliott-mfg.com